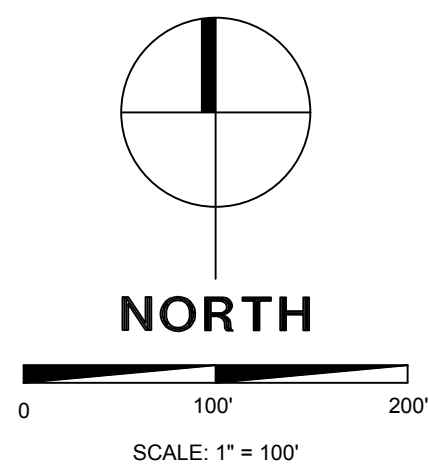


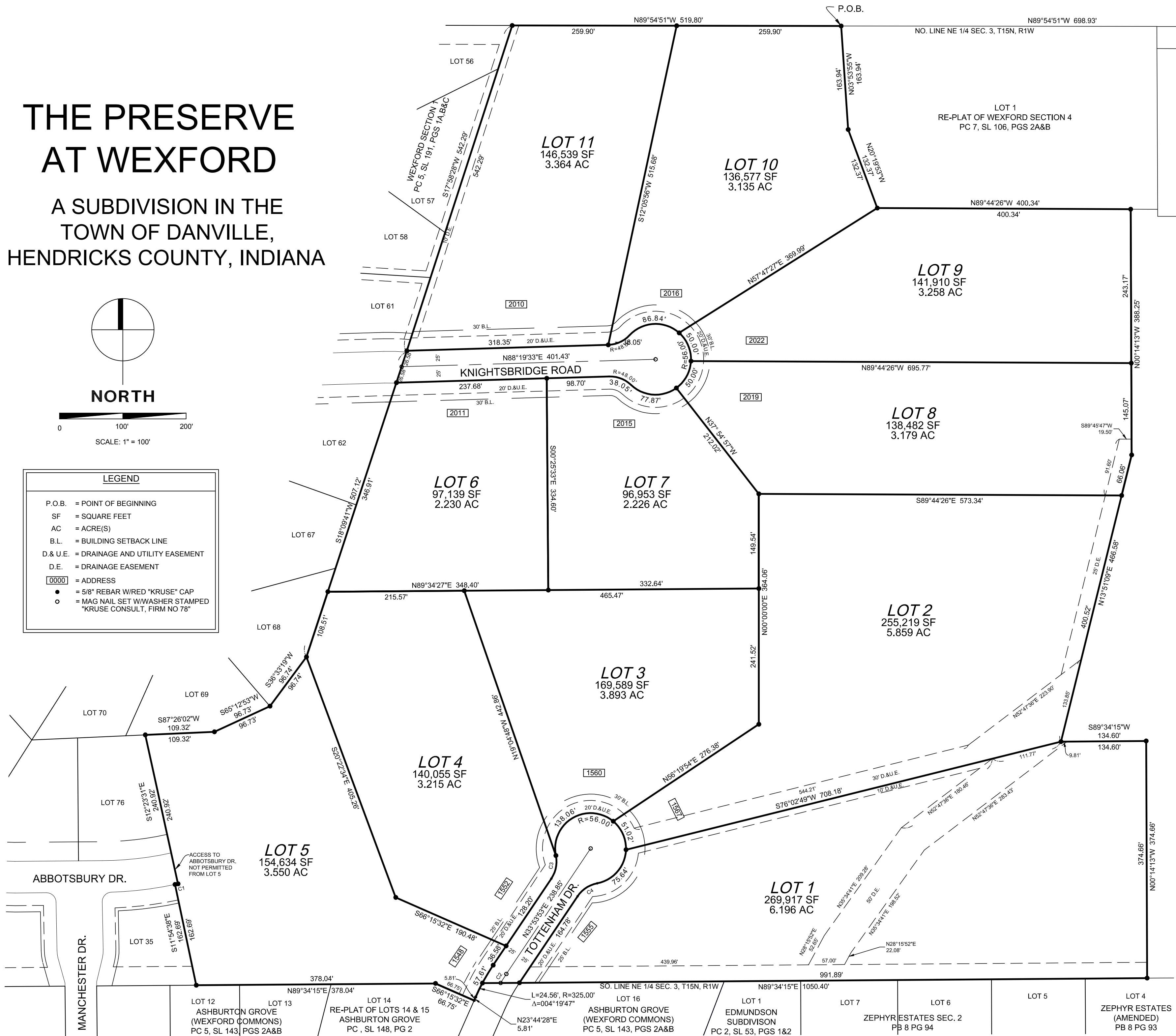
I AFFIRM, UNDER THE PENALTIES OF PERJURY, THAT I HAVE TAKEN REASONABLE CARE TO REDACT EACH SOCIAL SECURITY NUMBER IN THIS DOCUMENT, UNLESS REQUIRED BY LAW. PETER L. ARNOLD

THE PRESERVE AT WEXFORD

A SUBDIVISION IN THE
TOWN OF DANVILLE,
HENDRICKS COUNTY, INDIANA



LEGEND	
P.O.B.	= POINT OF BEGINNING
SF	= SQUARE FEET
AC	= ACRE(S)
B.L.	= BUILDING SETBACK LINE
D. & U.E.	= DRAINAGE AND UTILITY EASEMENT
D.E.	= DRAINAGE EASEMENT
00000	= ADDRESS
●	= 5/8" REBAR W/RED "KRUSE" CAP
○	= MAG NAIL SET W/WASHER STAMPED "KRUSE CONSULT, FIRM NO 78"



N.E. CORNER
NE 1/4 SEC. 3
T15N, R1W
STONE

PREPARED BY: PETER L. ARNOLD

**KRUSE
CONSULTING**
Civil Engineers & Land Surveyors
7384 Business Center Drive
Avon, Indiana 46123
(317) 272-5508 • Fax: (317) 272-2410